

Pudding Box House Kitchen

Text and drawings
by Nancy J. Rhode



The refrigerator is $\frac{7}{8}$ " high, the sink is $\frac{3}{4}$ " wide, the stove is $\frac{3}{4}$ " high.

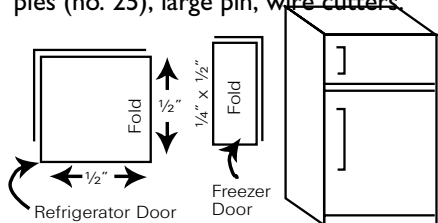
We have a bedroom, a living room, and now, a kitchen that will complete the Pudding Box House introduced in the January issue of *Miniature Collector* magazine. Furniture in all the rooms used the following basic materials. Additional materials required for this room are noted in the instructions. Common sources for materials are listed in the February issue.

What You'll Need:

- $\frac{3}{16}$ " thick foam core
- Felt
- Craft knife
- Fabric
- Craft glue
- Thin cardboard
- Copy-weight paper
- Acrylic paint: Black, White or Off-white; Navy
- Cardstock
- Ruler, small scissors

Refrigerator

You will also need: small metal staples (no. 25), large pin, wire cutters



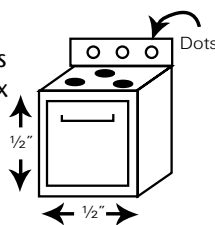
1. Cut two pieces of foam core $\frac{7}{8}$ " x $\frac{5}{8}$ ". Glue together on paper sides. Cut cardstock $\frac{3}{8}$ " wide x 4". Glue and wrap all four edges starting at bottom and ending at bottom. Cut a $\frac{1}{4}$ " x 1" strip. Fold in half and glue together. Cut to $\frac{1}{2}$ ". Glue to top for a freezer door. Repeat for refrigerator door, making it $\frac{1}{2}$ " x $\frac{1}{2}$ ". Paint with your choice of acrylics.

2. Handles: Poke holes on refrigerator

door the width of staples and about $\frac{1}{16}$ " from edge of door. Cut off most of the "legs" of staple and glue handle into holes. For freezer door cut off "legs" and cut handle to $\frac{1}{4}$ ". Glue to door about $\frac{1}{16}$ " from door's edge.

Stove

1. Cut two pieces of foam core $\frac{1}{2}$ " x $\frac{1}{2}$ ". Glue together. Wrap with cardstock as for refrigerator. Cut card to fit back plus $\frac{1}{8}$ " for knobs. Paint stove.

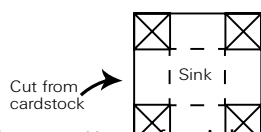
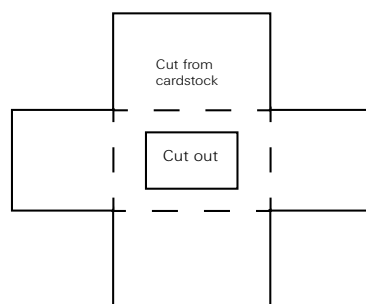


2. Burners: Cut point off a toothpick. Make three dots with black paint on top of stove with toothpick. Make three dots on $\frac{1}{8}$ " extension for knobs.

3. Oven: Cut a doubled card slightly smaller than oven. Glue to front. Make handle for oven with staple as for refrigerator.

Sink and Counter

You will also need: 20 gauge silver wire.



1. Trace patterns for sink and counter onto cardstock. Cut on the solid lines and score on the dotted

lines. Save the rectangle from sink opening. Glue sink cutout to the center of sink diagram. Glue diagram to cardstock. Cut out diagram, then cut out four corner squares marked with an "X". Score around sink. Fold up edges along sink.

2. Cut a $\frac{1}{8}$ "-wide piece of paper. Glue it around folded up edges of sink, forming a box. Push sink into opening until it is even with counter. Glue from wrong side where sink meets counter.

3. Paint sink. Paint a scrap of paper sink color. Cut $\frac{1}{8}$ " wide strips and glue around sink opening.

4. Cut 1" 20 gauge silver wire. Bend one end over a small ($\frac{1}{8}$ ") paintbrush handle. Poke a hole in the middle of one long side close to sink. Push wire into hole leaving top of bend $\frac{3}{8}$ " from counter and glue to end underneath where wire comes out.

Nancy J. Rhode made her first small-product box house with her granddaughter, Morgan, who wanted to make a project for her Brownie badge. Back issues of *Miniature Collector* magazine may be ordered from 800-458-8237 or at www.scottpublications.com.

Miniature Collector will pay \$50 for published "Kids' Corner" projects. Criteria: Easy-to-follow, brief instructions; accurate scale; inexpensive; attractive; original; and fun! Send a sample project and instructions to: "Kids' Corner," Scott Publications, 2145 W. Sherman Blvd., Muskegon, MI 49441-3434. Include postage if you want materials returned.