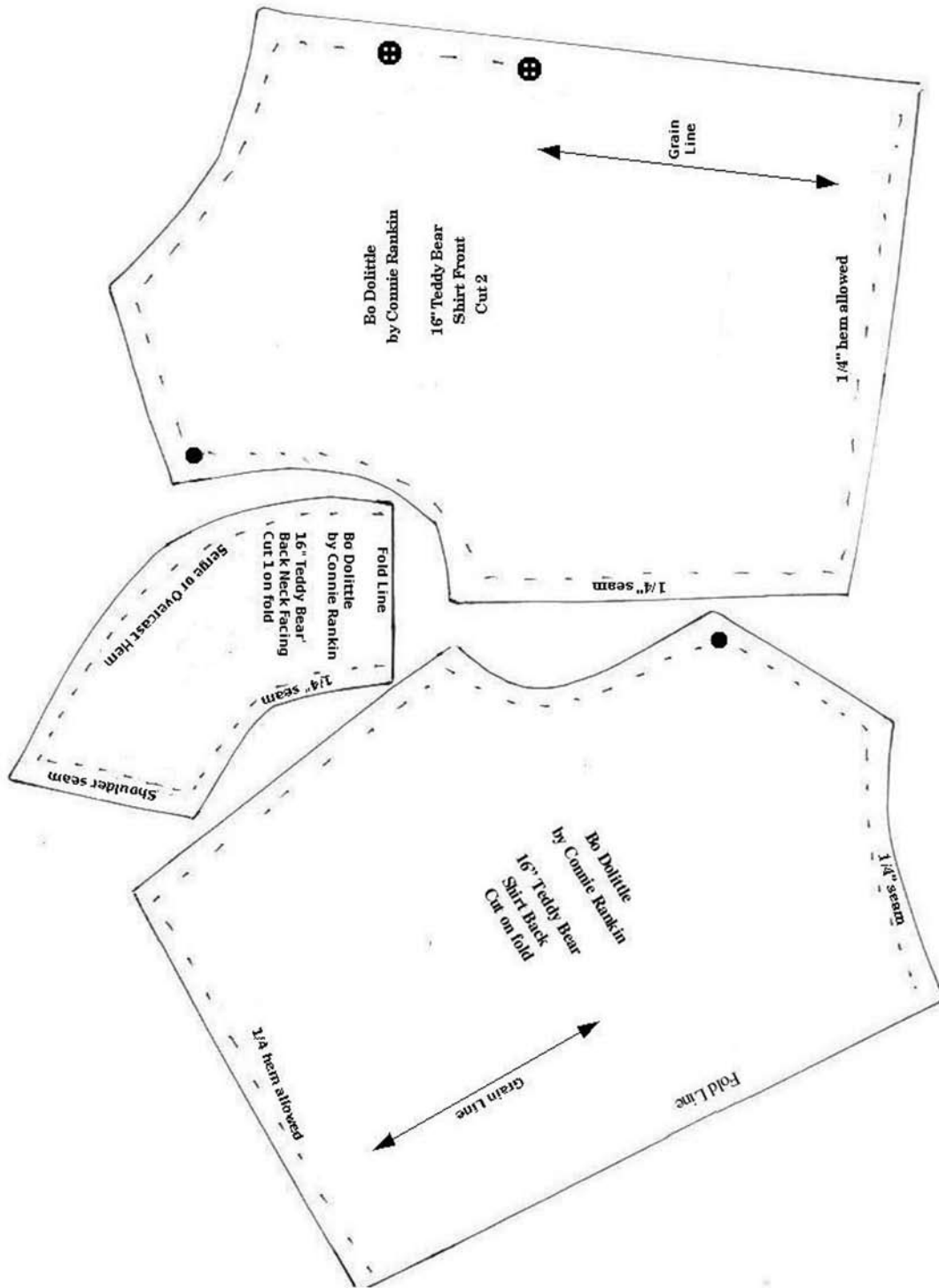
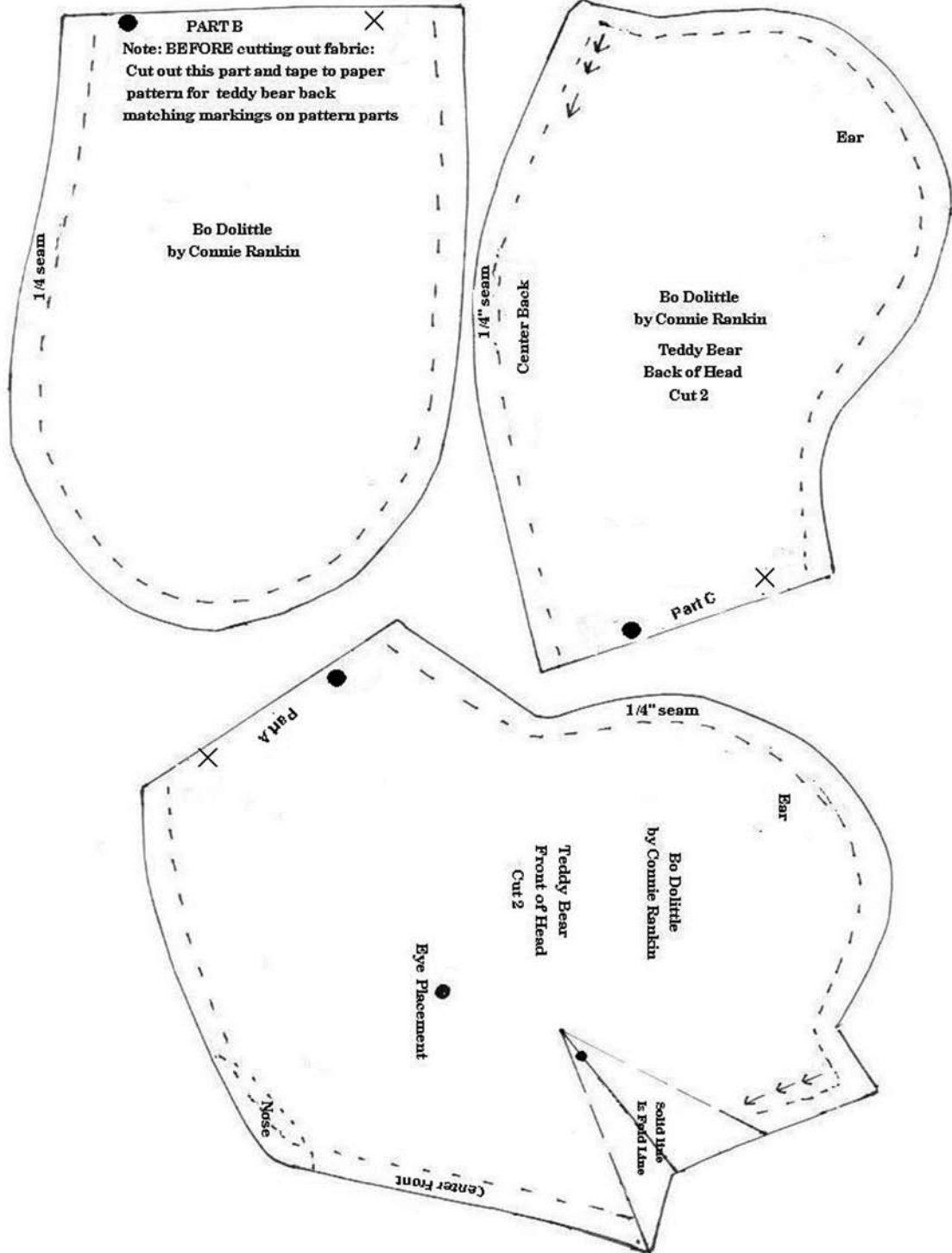
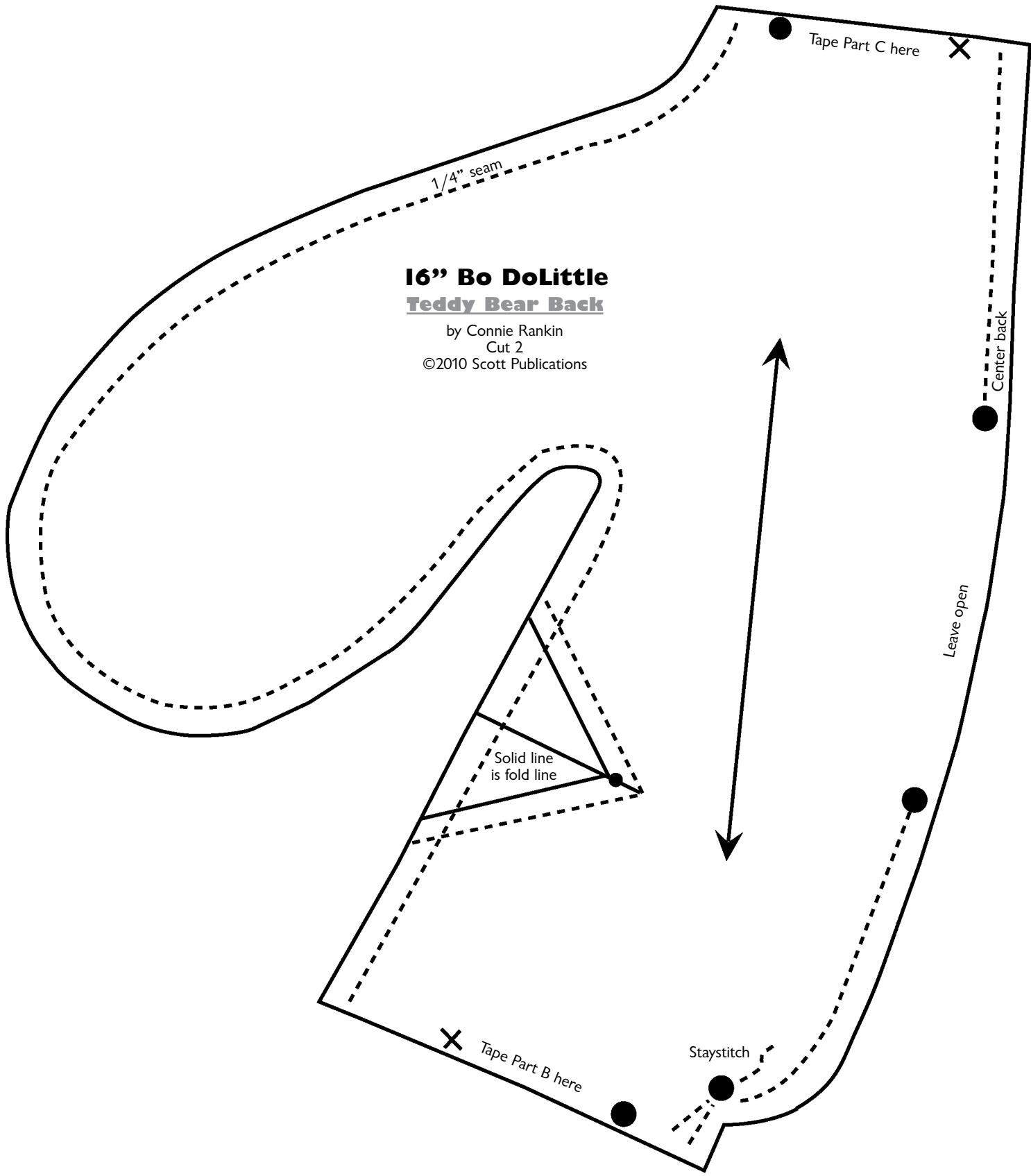


16" Bo DoLittle



16" Bo DoLittle





16" Bo DoLittle
Teddy Bear Back

by Connie Rankin
Cut 2
©2010 Scott Publications

1/4" seam

Tape Part C here

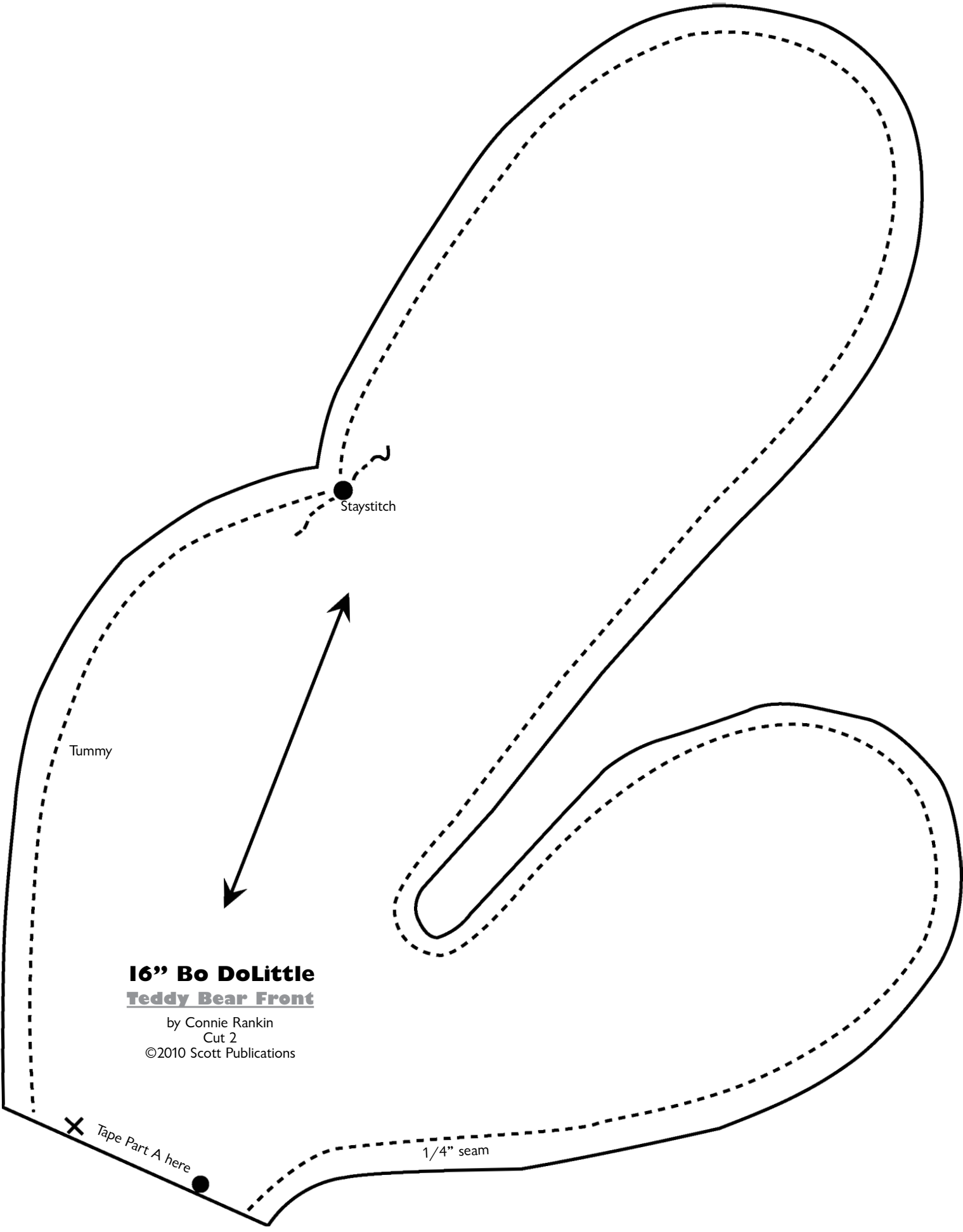
Center back

Leave open

Solid line
is fold line

Staystitch

Tape Part B here



Staystitch

Tummy

16" Bo DoLittle
Teddy Bear Front

by Connie Rankin
Cut 2
©2010 Scott Publications

✕ Tape Part A here

1/4" seam